

Bulfinch



BUILDING 100

CAMBRIDGE DISCOVERY PARK

100 Acorn Park Drive, Cambridge, MA



PROPERTY HIGHLIGHTS

- **23,605 SF lab/office space on 4th floor**
- CDP is a 27-acre first-class lab, office and research campus on Route 2 in Cambridge
- One of the largest campuses in Cambridge
- Delivers first-class amenities both on and off site in a richly landscaped environment
- 20 minute drive to Boston; 5 minute walk to train
- Part of the Alewife Life Science Cluster
- Amenities include: Walking trails, outdoor seating, full-service fitness and yoga center, blue bikes, electric charging stations, public wifi



Easy access to
Alewife MBTA



Free MBTA
shuttle service



Garage
Parking



Cafe + Onsite/
Nearby Amenities



Fully equipped
on-site gym



WiredScore
Silver Certified

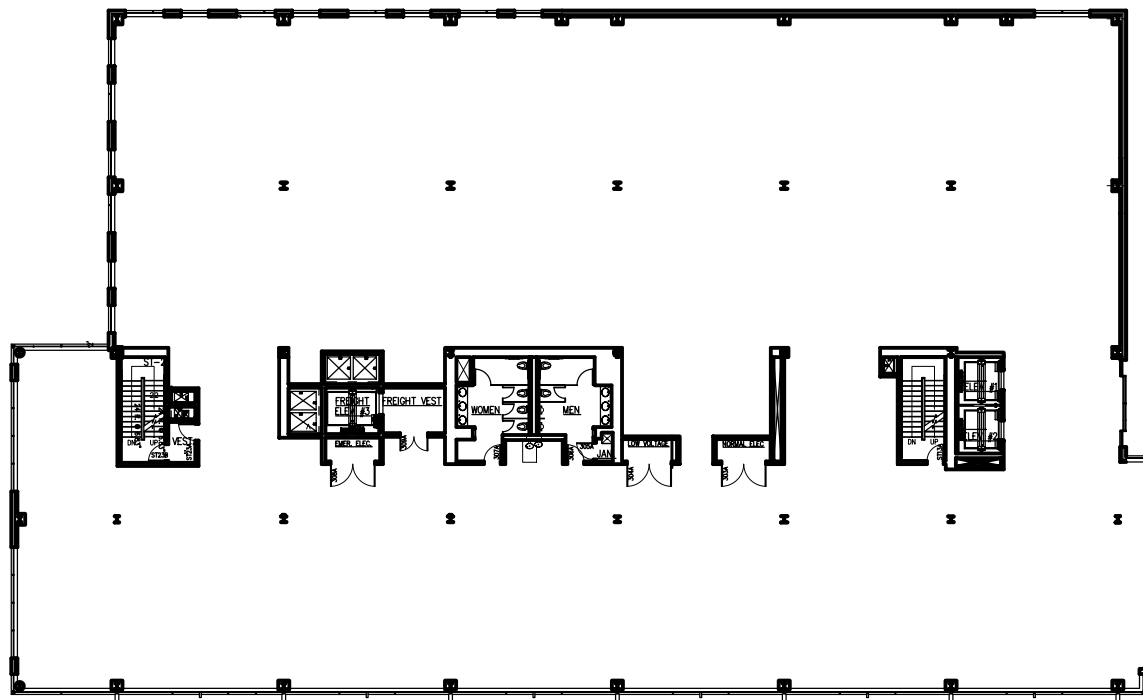
23,605 SF
Available
(4th floor)



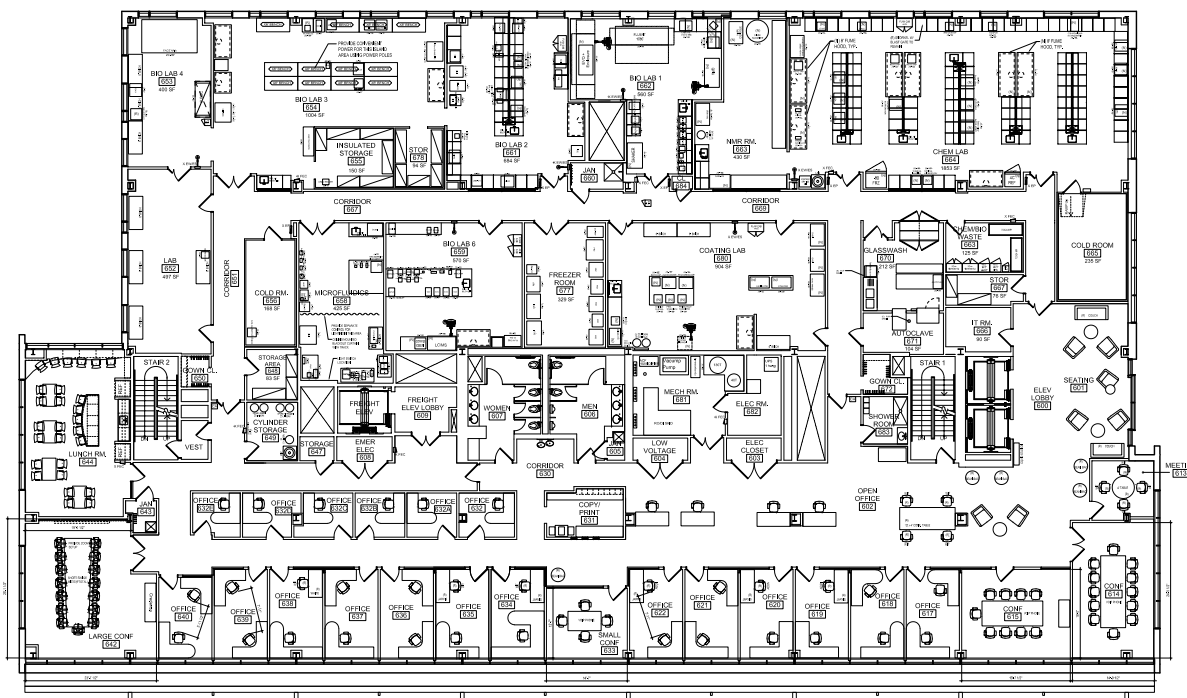
ALEWIFE LIFE SCIENCE CLUSTER



4TH FLOOR PLAN — 23,605 SF



SAMPLE LAB / OFFICE FLOOR PLAN



For leasing information, please contact Michael Wilcox: 781.707.4182 or mbw@bulfinch.com

116 Huntington Avenue, Suite 600, Boston, MA 02116 | 781.707.4000 | bulfinch.com

Bulfinch

